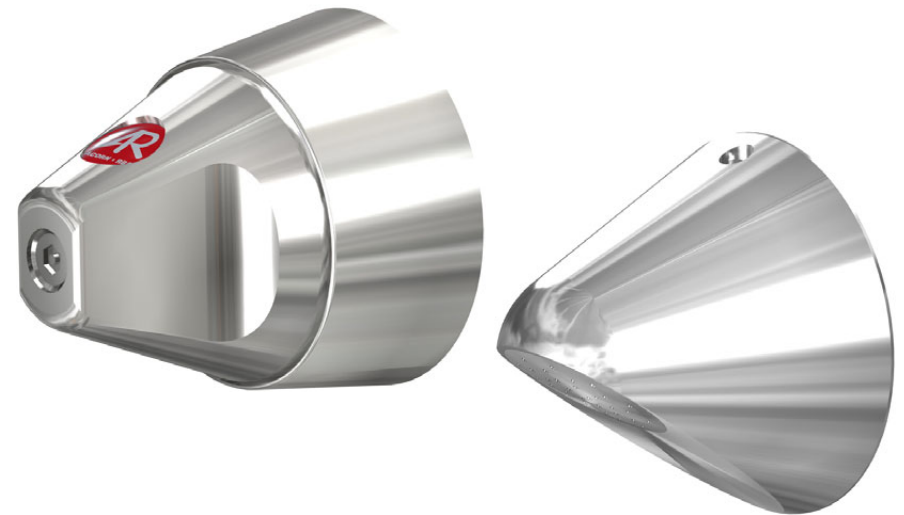




rba

INSTALLATION INSTRUCTIONS

FOR MODELS:
A519-1 CONICAL SHOWER SET
[INCLUDES ROSE, HOT HANDLE & COLD HANDLE]
A519-2 CONICAL SHOWER ROSE ONLY
A519-3 CONICAL HANDLE, COLD
A519-4 CONICAL HANDLE, HOT



For further information,
contact the nearest RBA Group office:
SYDNEY • MELBOURNE • BRISBANE
Phone: 1300 788 778 • Fax: 1300 788 878
info@rba.com.au • www.rba.com.au

INSTALLATION INSTRUCTIONS - CONICAL HANDLE



At all times installation should be carried out in accordance with local requirements.

The recess cock body (not supplied) should be fitted such that the face of the body is 5mm – 12mm below, and parallel with, the finished surface.

The SBA is adjustable in length to allow for minor variations in the recess cock body, and is therefore manufactured in two parts.

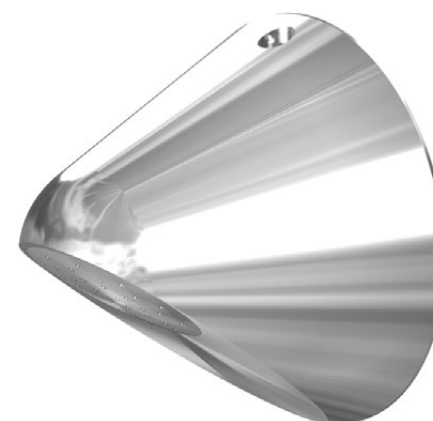
To fit the SBA, first remove the threaded adaptor from the spindle and screw the spindle into the recess cock body. Do not over tighten, as this will damage the seal at the base of the spindle.

Next fit the threaded adaptor and tighten firmly.

The CP flange can now be fitted to the adaptor, and locked into place using the grub screw provided, and tightened with a 2.5mm allen key. It may be necessary to lightly drill the finished surface to allow the screw to penetrate, ensuring that the flange cannot be turned.

The handle should then be fitted, with the identifying button to the top, using the 4mm security bit provided. Security allen key should be ordered separately as part number A111-88.

INSTALLATION INSTRUCTIONS - CONICAL SHOWER ROSE



The security shower rose is manufactured in two parts, the rose and a 15mm female threaded adaptor.

If installing into a masonry wall, a 15mm BSP male thread should be left, 15mm beyond the finished wall.

The threaded adaptor can then be screwed to the thread.

The rose can then be fitted, after drilling the surface to accommodate the locating pin. The rose should be locked on using the grub screw located at the top, with a 2.5mm allen key.

The unit is also supplied with a further adaptor and nylon elbow when fitting to a metal panel.